



*Alloy Valves and Control*

# BALL VALVES 1700 SERIES



**Size:**

1/2" - 2"  
2000 WOG

**End Connections:**

NPT  
Butt Weld  
Socket Weld  
Flange -150, 300, 600

**Valve Materials**

316 Stainless Steel  
Carbon Steel

**Ball and Stem Materials:**

316 Stainless Steel

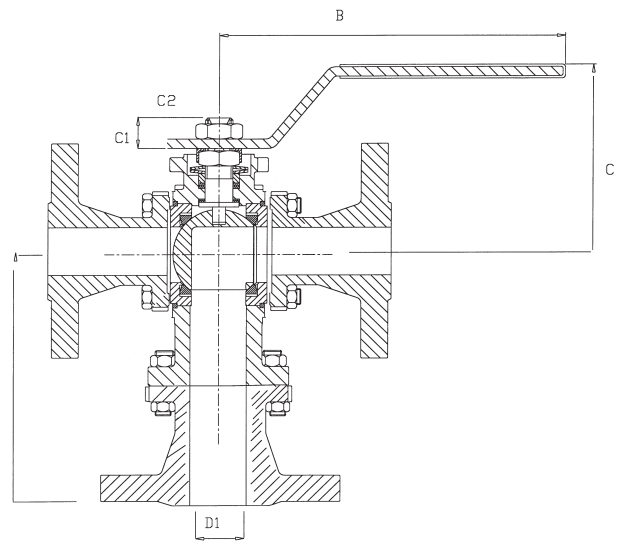
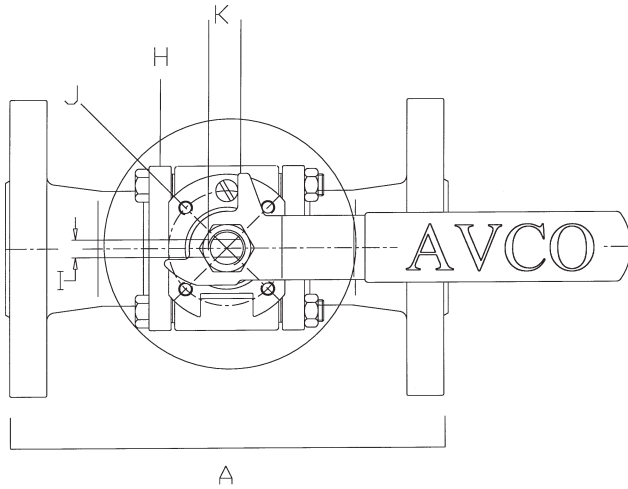
**Service Applications:**

Hydraulic      Chemical  
Steam            Oil/Gas  
Oxygen          Food Processing  
Vacuum          Dry/Liquid Chlorine  
Thermal Fluids

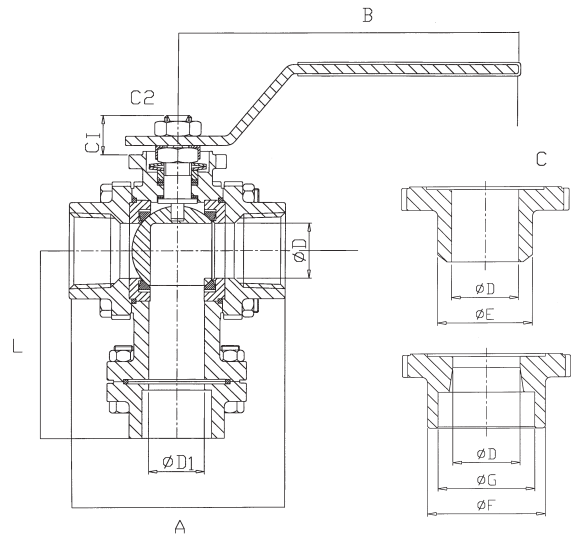
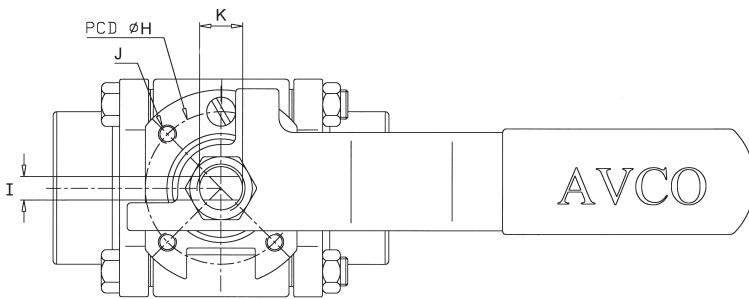
**Seat Materials:**

Teflon  
Reinforced Teflon  
TFE-25% Carbon/Graphite  
PEEK  
UHMWPE  
Metal

## Alloy Valves and Control



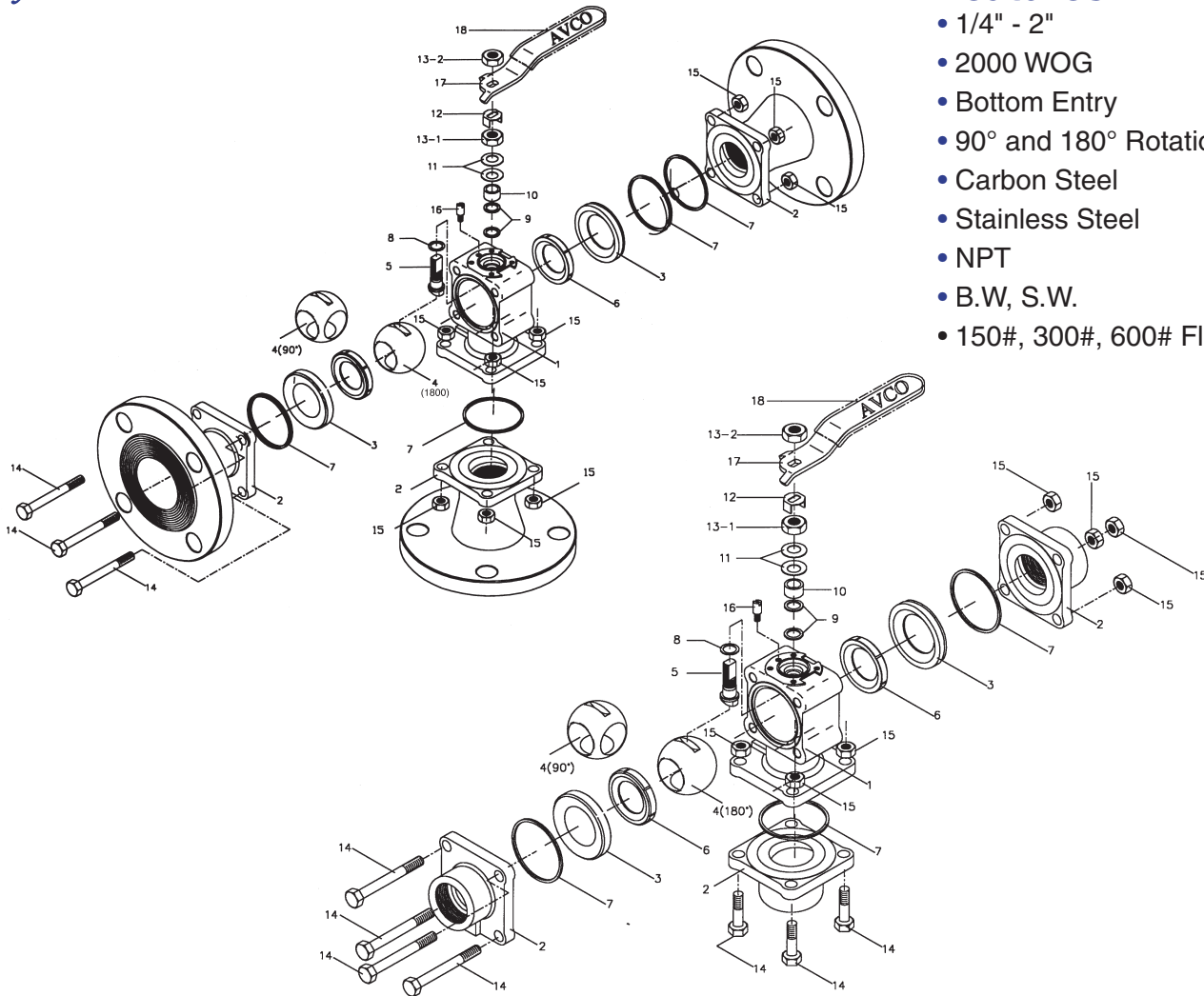
Flanged	A	B	C	C1	C2	D	D1	H	I	J	K	L	ISO5211	LBS
¼- 3/8" -½"	5.50	4.50	2.19	0.48	0.34	0.45	0.43	1.42	0.22	M5	3/8"24UNF	4.45	F03	7.50
¾"	6.00	4.50	2.28	0.55	0.39	0.70	0.69	1.42	0.22	M5	3/8"24UNF	4.50	F03	8.50
1"	6.50	5.75	2.63	0.60	0.56	0.90	0.90	1.65	0.30	M5	7/16"24UN	4.60	F04	14.00
1 ¼"	7.50	5.75	2.80	0.61	0.56	1.15	1.15	1.65	0.30	M5	7/16"24UNF	5.51	F04	16.00
1 ½"	7.50	7.00	3.23	1.07	0.73	1.35	1.40	1.97	0.34	M6	9/16"24UNF	5.59	F05	22.50
2"	8.00	7.00	3.58	1.10	0.78	1.80	1.85	1.97	0.34	M6	9/16"24UNF	6.10	F05	35.00



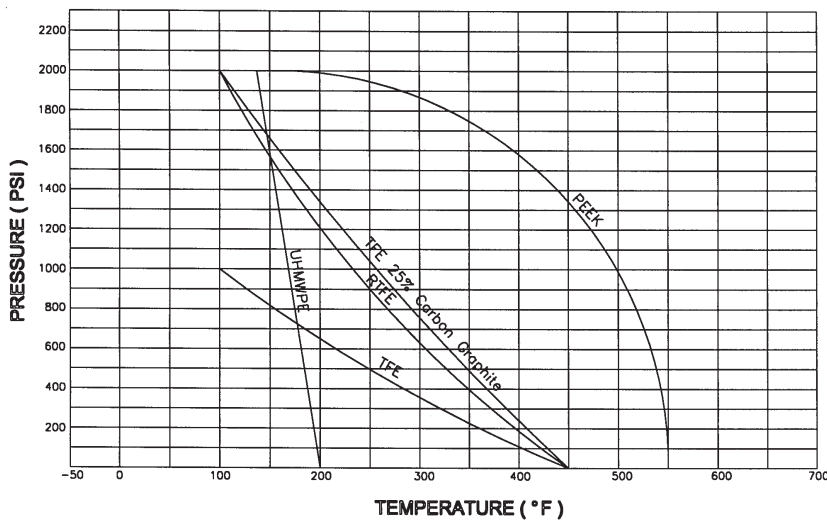
NPS	A	B	C	C1	C2	D	D1	E	F	G	H	I	J	K	L	ISO5211	LBS
¼" -3/8" - ½"	2.95	4.50	2.19	0.48	0.34	0.45	0.43	0.87	1.10	0.90	1.42	0.22	M5	3/8" -24UNF	2.75	F03	1.50
¾"	3.15	4.50	2.28	0.55	0.39	0.70	0.69	1.10	1.38	1.10	1.42	0.22	M5	3/8"-24UNF	2.75	F03	2.50
1"	3.66	5.75	2.63	0.60	0.56	0.90	0.90	1.34	1.77	1.40	1.65	0.30	M5	7/16"24UNF	3.45	F04	5.00
1 ¼"	4.33	4.75	2.80	0.61	0.56	1.15	1.15	1.61	2.13	1.70	1.65	0.30	M5	7/16"24UNF	4.15	F04	8.00
1 ½"	4.72	7.00	3.23	1.07	0.73	1.35	1.40	1.93	2.44	1.90	1.97	0.34	M6	9/16"24UNF	4.15	F05	10.50
2"	5.51	7.00	3.58	1.10	0.78	1.80	1.85	2.40	2.99	2.40	1.97	0.34	M6	9/16"UNF	4.50	F05	17.00

### Features

- 1/4" - 2"
- 2000 WOG
- Bottom Entry
- 90° and 180° Rotation
- Carbon Steel
- Stainless Steel
- NPT
- B.W, S.W.
- 150#, 300#, 600# Flanged



### 2000 WOG PRESSURE TEMPERATURE RATING



Parts \ Material	Stainless Steel	Carbon Steel
1 Body	ASTM A351-CF8M	ATSM A216-WCB
2 Cap		
3 Retainer		
4 Ball		ASTM A351-CF8M
5 Stem	ASTM A276-316	ASTM A276-316
6 Ball Seat	PTFE	PTFE
7 Gasket	PTFE	PTFE
8 Thrust Washer	TFE 25% Carbon	TFE 25% Carbon
9 Packing		
10 Gland Ring	AISI 304	AISI 304
11 Disc Spring	AISI 301	AISI 301
12 Lock Pad	ASTM A167-304	ASTM A167-304
13 Stem Nut	ASTM A194 GR. 8	ASTM A194 GR. 8
14 Bolt	ASTM A193-B8	ASTM A193-B7
15 Nut		
16 Stop Pin	AISI 304	AISI 304
17 Handle	ASTM A167-304	ASTM A167-304
18 Handle Sleeve	PVC	PVC



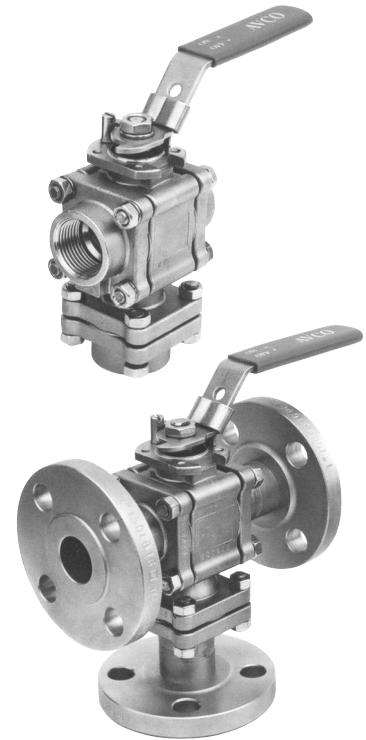
### Electric Actuator

- 120 VAC
- 12/24 VDC
- NEMA 4/7
- Positioners 4-20 MA
- Reversing
- Telemetry
- Battery Back-up



### Pneumatic Actuators

- Double Acting
- Spring Return
- Solenoid Valves
- Limit Switches
- Positioners 3-15 PSI
- Positioners 4-20 mA
- Intelligent Positioner
- Declutchable Manual Override



### Manual Valves

- Oval Handle
- Spring Return
- Stem Extensions
- Fusible Link
- Locking Device
- Gear Operators
- Wing Handle

### HOW TO ORDER

Size	Series	Body & End Material	Ball & Stem	Seat	Seal	End
1/4"	1700 Series	1-Carbon Steel	1-	T-TFE	T-TFE	SE-NPT
3/8"	3 Piece	2-	2-	R-RTFE	C-TFE-25%	SW-Socket Weld
1/2"	Diverter	3-316SS	3-316SS	C-TFE-25%	Carbon Graphite	BW-Butt Weld
3/4"	Ball Valve	4-	4-	Carbon Graphite	G-Graphoil	150#-150# Flange
1"	Bottom Entry	5-	5-	P-PEEK		300-300# Flange
1 1/4"		6-	6-	U-UHWMPE		600-600# Flange
1 1/2"			7-	B-Metal-Bronze		
2"			8-	S-Metal-Stellite		
			9-	I-Metal Inconel		
				K-Kel-F		

Distributed by:

Copyright © 2003 Alloy Valves and Control, Inc. All rights reserved. No part of this brochure may be used or reproduced in any manner whatsoever without written permission of AVCO.

This brochure is general in nature and manufacturer reserves the right to alter dimensions, materials or make design improvements